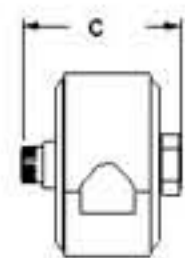
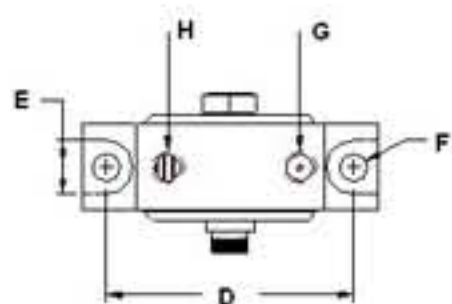


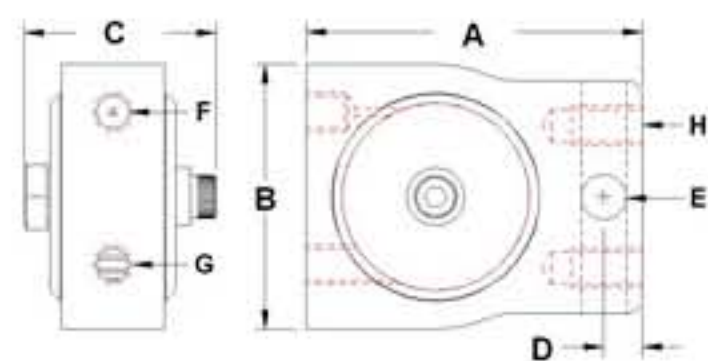
CVT-P-22



A 2-1/4" (5.7cm)	B 1-1/4" (3.1cm)
C 1-3/32" (2.8cm)	D 1-3/4" (4.4cm)
E 3/8" (0.95cm)	F 7/32" (0.56cm)
G #10-32 UNF	H #10-32 UNF

Weight 0.10 lbs.	Unbalance .006 in-lbs (.007 cm-kg)	AIR CNSMP @ 80 psi ; 5.4bar 2.0 cfm ; 55.4 lpm
FREQ. @ 80 psi ; 5.4bar 18,000 VPM	Force @ 80 psi ; 5.4 bar 55.2 lbf (245.1N)	

CVT-P-50



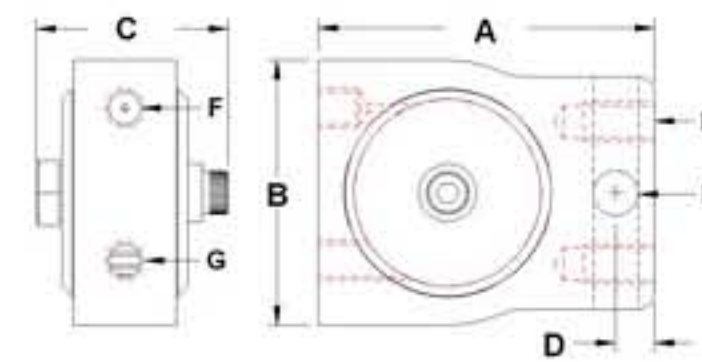
A 4" (10.2cm)	B 2-1/2" (6.4cm)
C 1-5/8" (4 cm)	D 3/4" (1.9cm)
E 3/8" (.95cm)	F 1/4" NPT
G 1/4" NPT	H NA

Weight 1.00 lbs.	Unbalance .044 in-lbs (.052 cm-kg)	AIR CNSMP @ 80 psi ; 5.4bar 4.9 cfm ; 138.4 lpm
FREQ. @ 80 psi ; 5.4bar 8070 VPM	Force @ 80 psi ; 5.4 bar 81.4 lbf (361.4N)	

上海欣帆机电科技有限公司
电话: 021-62255510
www.shinfan.com



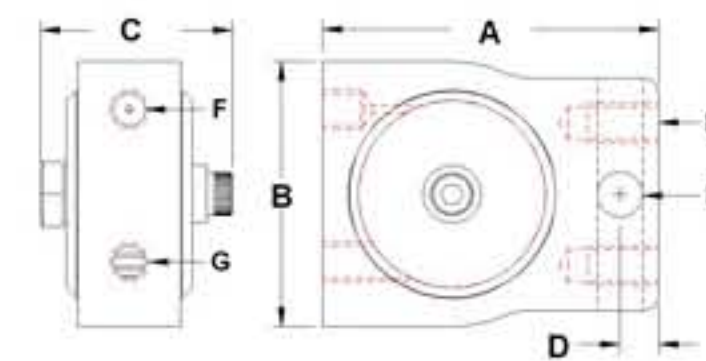
CVT-P-30



A 2-3/4" (7cm)	B 1-3/4" (4.04cm)
C 1-1/4" (3.2cm)	D 3/8" (.95cm)
E 11/32" (.84cm)	F 1/8" NPT
G 1/8" NPT	H NA

Weight 0.50 lbs.	Unbalance .013 in-lbs (.017 cm-kg)	AIR CNSMP @ 80 psi ; 5.4bar 2.8 cfm ; 78.4 lpm
FREQ. @ 80 psi ; 5.4bar 11,300 VPM	Force @ 80 psi ; 5.4 bar 47.1 lbf (209.1N)	

CVT-P-60



A 4-1/8" (10.5cm)	B 2-11/16" (5.2cm)
C 2-1/16" (5.2cm)	D 11/16" (1.7cm)
E 7/16" (1.1cm)	F 1/4" NPT
G 1/4" NPT	H NA

Weight 1.20 lbs.	Unbalance .12 in-lbs (.14 cm-kg)	AIR CNSMP @ 80 psi ; 5.4bar 3.6 cfm ; 101.2 lpm
FREQ. @ 80 psi ; 5.4bar 6560 VPM	Force @ 80 psi ; 5.4 bar 146.8 lbf (651.8N)	